

International Endodontic Product Catalog



WHITE Dental®

Better Patient Outcomes
Improved Efficiency
Faster Practice Growth

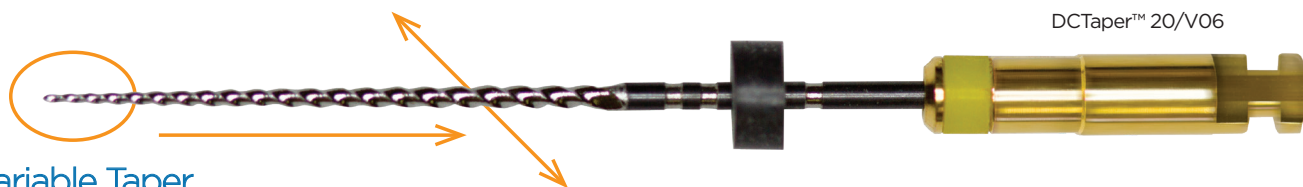
DCTaper™ Rotary NiTi File System (non-heat treated)

Non-Cutting Tip

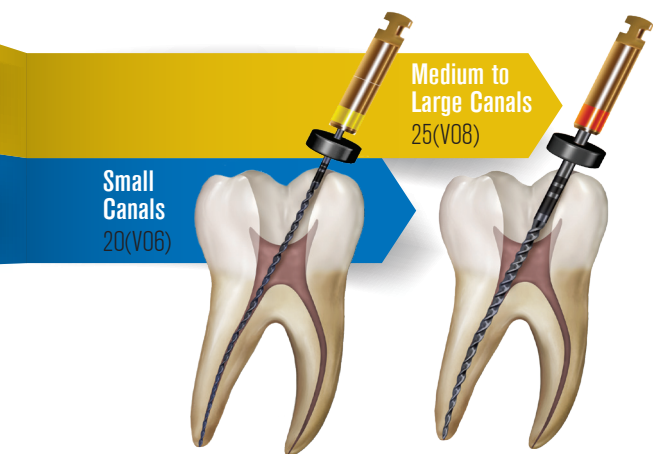
Variable Pitch

DCTAPER™
DENTIN CONSERVATION FILE SYSTEM
DCTaper™ 20/V06

Variable Taper



	Size 13/V03	21mm 21317	25mm 21318	Qty. 6-Pk.	Recommended SS White Accessory Cones Gutta Percha			Recommended SS White Paper Point		
					Size	Pk.	Size Order #	Size	Pk.	Size Order #
Glide Path	17/V04	21301	21309	6-Pk.	FF	-	#200002	-	-	-
	20/V06	21302	21310	6-Pk.	FF	100	#200002	F	200	#200014
2 File System	25/V08	21303	21311	6-Pk.	MF	100	#200003	F	200	#200014
	30/V06	21304	21312	6-Pk.	MF	100	#200003	F	200	#200014
Additional Sizes Available	35/V06	21305	21313	6-Pk.	25/04	60	#200022	25/04	100	#200033
	40/V06	21306	21314	6-Pk.	30/04	60	#200023	30/04	100	#200034
	45/V06	21307	21315	6-Pk.	35/04	60	#200024	35/04	100	#200035
	50/V06	21308	21316	6-Pk.	40/04	60	#200025	40/04	100	#200036



DCTAPER^H
DENTIN CONSERVATION FILE SYSTEM

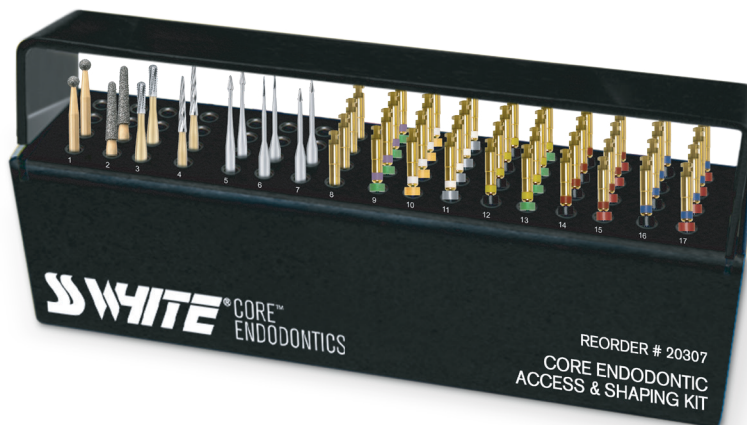
STERILE R AVAILABLE IN STERILE 6 PACKS

SS White® Endodontic Access & Shaping Kit

Features the

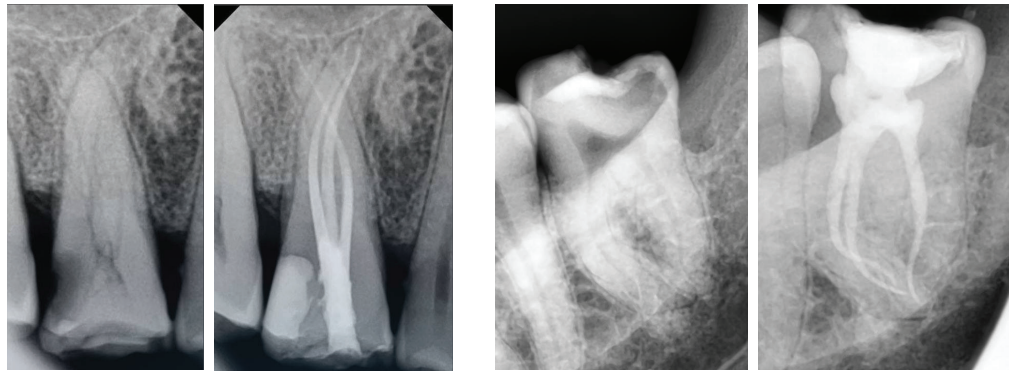
DCTAPER^H
DENTIN CONSERVATION FILE SYSTEM

THE SSW ENDODONTIC KIT INCLUDES THE INSTRUMENTS FOR COMPLETION OF ENDODONTIC ACCESS, SHAPING, AND FINISHING



ORDER# 20307

Often Imitated NEVER Duplicated



Courtesy: Dr. Eugen Buga

2 File Shaping-Finishing System

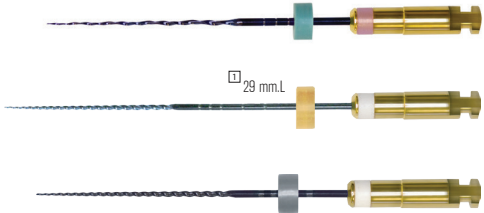


Size	17mm	-	-	Qty.
25(v09)	21367	-	-	6-Pk.
25(v09)	21367-S6	-	-	6-Pk.

Recommended SS White
Accessory Cones
Gutta Percha
Size Pk. Size Order #

Recommended SS White
Paper Point
Size Pk. Size Order #

Glide Path File System

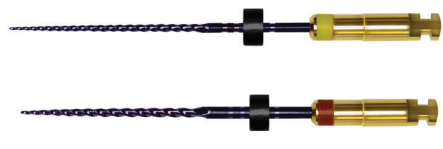


Size	21mm	25mm	31mm	Qty.
13(V03)	21362	21363	21350	6-Pk.
13(V03)	21362-S6	21363-S6	21350-S6	6-Pk.
14(V03)	21364	21365	21366	6-Pk.
14(V03)	21364-S6	21365-S6	21366-S6	6-Pk.
17(V04)	21319	21330	21351	6-Pk.
17(V04)	21319-S6	21330-S6	21351-S6	6-Pk.

-	-	-	-	-
-	-	-	-	-
-	-	-	-	-
FF	100	#200002	XF	200 #200013
FF	100	#200002	XF	200 #200013

-	-	-	-	-
-	-	-	-	-
-	-	-	-	-
XF	200	#200013	XF	200 #200013
XF	200	#200013	XF	200 #200013

2 File System



20(V06)	21320	21331	21352	6-Pk.
20(V06)	21320-S6	21331-S6	21352-S6	6-Pk.
25(V06)	21322	21333	21354	6-Pk.
25(V06)	21322-S6	21333-S6	21354-S6	6-Pk.

MF	100	#200003	F	200 #200014
MF	100	#200003	F	200 #200014
MF	100	#200003	F	200 #200014
MF	100	#200003	F	200 #200014

F	200	#200014	F	200 #200014
F	200	#200014	F	200 #200014
F	200	#200014	F	200 #200014
F	200	#200014	F	200 #200014

Additional Sizes Available



22(V07)	21321	21332	21353	6-Pk.
22(V07)	21321-S6	21332-S6	21353-S6	6-Pk.
25(V08)	21323	21334	21355	6-Pk.
25(V08)	21323-6S	21334-6S	21355-6S	6-Pk.
30(V06)	21324	21335	21356	6-Pk.
30(V06)	21324-6S	21335-6S	21356-6S	6-Pk.
30(V08)	21325	21336	21357	6-Pk.
30(V08)	21325-S6	21336-S6	21357-S6	6-Pk.
35(V06)	21326	21337	21358	6-Pk.
35(V06)	21326-S6	21337-S6	21358-S6	6-Pk.
40(V06)	21327	21338	21359	6-Pk.
40(V06)	21327-S6	21338-S6	21359-S6	6-Pk.
45(V06)	21328	21339	21360	6-Pk.
45(V06)	21328-S6	21339-S6	21360-S6	6-Pk.
50(V06)	21329	21340	21361	6-Pk.
50(V06)	21329-S6	21340-S6	21361-S6	6-Pk.

FF	100	#200002	XF	200 #200013
FF	100	#200002	XF	200 #200013
MF	100	#200003	F	200 #200014
MF	100	#200003	F	200 #200014
MF	100	#200003	F	200 #200014
MF	100	#200003	F	200 #200014
MF	100	#200003	F	200 #200014
MF	100	#200003	F	200 #200014
25/04	60	#200022	25/04	100 #200033
25/04	60	#200022	25/04	100 #200033
30/04	60	#200023	30/04	100 #200034
30/04	60	#200023	30/04	100 #200034
35/04	60	#200024	35/04	100 #200035
35/04	60	#200024	35/04	100 #200035
40/04	60	#200025	40/04	100 #200036
40/04	60	#200025	40/04	100 #200036

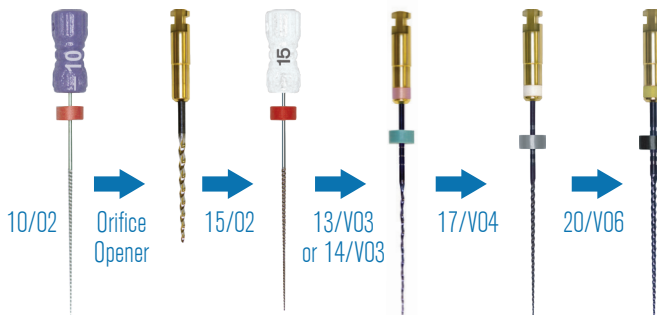
XF	200	#200013	XF	200 #200013
XF	200	#200013	XF	200 #200013
F	200	#200014	F	200 #200014
F	200	#200014	F	200 #200014
F	200	#200014	F	200 #200014
F	200	#200014	F	200 #200014
F	200	#200014	F	200 #200014
F	200	#200014	F	200 #200014
25/04	100	#200033	25/04	100 #200033
25/04	100	#200033	25/04	100 #200033
30/04	100	#200034	30/04	100 #200034
30/04	100	#200034	30/04	100 #200034
35/04	100	#200035	35/04	100 #200035
35/04	100	#200035	35/04	100 #200035
40/04	100	#200036	40/04	100 #200036
40/04	100	#200036	40/04	100 #200036

Includes everything you need for endodontic access, shaping & finishing.

Description Assorted Pack	21mm	25mm	31mm	Qty.	Description Assorted Pack	21mm	25mm	31mm	Qty.
DCTaperH™ 00-14-17-20-25-30	21375	21376	-	6-Pk.	DCTaperH™ 17-20-25	21341	21342	21372	3-Pk.
DCTaperH™ 17-20-25-30-35-40	21377	21378	21379	6-Pk.	STERILE R 21341-S3	21342-S3	-	3-PK	
DCTaperH™ 17-20-22-25-30-35	21380	21381	21382	6-Pk.	DCTaperH™ 30-35-40	21368	21370	21373	3-Pk.
					DCTaperH™ 40-45-50	21369	21371	21374	3-Pk.

Recommended DCTaperH™ Protocol

Basic Sequence



Optional Shaping Files for Larger Canals



Recommended speed is 150 to 400 rpm

Recommended torque limit is 450 g/cm (4.4 N/cm).

- Establish the initial glide path patency with #8 or #10 hand files.
- Enlarge / expand canal orifice with a DCTaperH™ 20/06 or 25/06 rotary file going apically about 1 -2 mm (D1-D2) past the orifice. The SS White Orifice Opener may be used if preferred by the clinician. An EG #2 slow speed with a light touch can also be used. Avoid using Gates Gliddens or Peeso reamers as canal orifice openers.
- Complete hand filing from #10-#15 hand file depending on the size and shape of the canal anatomy. Next use DCTaper 13/v03 or 14/v03 and DCTaperH™ 17/v04 to initiate rotary filing sequence.
- Irrigate with NAOCL (using side vented irrigation needle) alternating with EDTA or equivalent with each pass of the next instrument and when recapitulating with hand files.
- Use lubricant with each file.
- Use each file sequentially to apical working length until desired enlargement is achieved.
- Allow files to engage and advance apically to resistance on their own - do not push or “help” them advance through resistance.
- After the file engages dentin for 1-3mm remove it and wipe dentinal debris from file flutes to enhance debris removal.

EXACTTaper™ System



SKU	DESCRIPTION	PK Size	PROTAPER®	PROTAPER® UNIVERSAL	EDGE SKU	EDGE TAPER®
			UNIVERSAL	DESCRIPTION		
TTUSX19	EXACTTaper™ SX 6 pack 19 mm	6 Pk	PTURSX19	ProTaper® Universal Rotary File Shaper X 19mm	ETSX19	SX 19 mm
TTUAS21	EXACTTaper™ SX-F3 ASST 21mm	6 Pk	PTURA21	ProTaper® Universal Rotary Files Asstd (SX-S2, F1-F3) 21mm	ETASST21	
TTUS121	EXACTTaper™ S1 6 pack: 21 mm	6 Pk	PTURS121	ProTaper® Universal Rotary File Shaper 1 Purple 21mm	ETS121	S1 21 mm
TTUS221	EXACTTaper™ S2 6 pack: 21 mm	6 Pk	PTURS221	ProTaper® Universal Rotary File Shaper 2 White 21mm	ETS221	S2 21 mm
TTUF121	EXACTTaper™ F1 6 pack: 21 mm	6 Pk	PTURF121	ProTaper® Universal Rotary File Finisher 1 Yellow 21mm	ETF121	F1 21 mm
TTUF221	EXACTTaper™ F2 6 pack: 21 mm	6 Pk	PTURF221	ProTaper® Universal Rotary File Finisher 2 Red 21mm	ETF221	F2 21 mm
TTUF321	EXACTTaper™ F3 6 pack: 21 mm	6 Pk	PTURF321	ProTaper® Universal Rotary File Finisher 3 Blue 21mm	ETF321	F3 21 mm
TTUF421	EXACTTaper™ F4 6 pack: 21 mm	6 Pk	PTURF421	ProTaper® Universal Rotary File Finisher 4 Double Black 21mm	ETF421	F4 21 mm
TTUF521	EXACTTaper™ F5 6 pack: 21 mm	6 Pk	PTURF521	ProTaper® Universal Rotary File Finisher 5 Double Yellow 21mm	ETF521	F5 21 mm
TTUAS25	EXACTTaper™ SX-F3 ASST 25mm	6 Pk	PTURA25	ProTaper® Universal Rotary Files Asstd (SX-S2, F1-F3) 25mm	ETASST25	
TTUS125	EXACTTaper™ S1 6 pack: 25 mm	6 Pk	PTURS125	ProTaper® Universal Rotary File Shaper 1 Purple 25mm	ETS125	S1 25 mm
TTUS225	EXACTTaper™ S2 6 pack: 25 mm	6 Pk	PTURS225	ProTaper® Universal Rotary File Shaper 2 White 25mm	ETS225	S2 25 mm
TTUF125	EXACTTaper™ F1 6 pack: 25 mm	6 Pk	PTURF125	ProTaper® Universal Rotary File Finisher 1 Yellow 25mm	ETF125	F1 25 mm
TTUF225	EXACTTaper™ F2 6 pack: 25 mm	6 Pk	PTURF225	ProTaper® Universal Rotary File Finisher 2 Red 25mm	ETF225	F2 25 mm
TTUF325	EXACTTaper™ F3 6 pack: 25 mm	6 Pk	PTURF325	ProTaper® Universal Rotary File Finisher 3 Blue 25mm	ETF325	F3 25 mm
TTUF425	EXACTTaper™ F4 6 pack: 25 mm	6 Pk	PTURF425	ProTaper® Universal Rotary File Finisher 4 Double Black 25mm	ETF425	F4 25 mm
TTUF525	EXACTTaper™ F5 6 pack: 25 mm	6 Pk	PTURF525	ProTaper® Universal Rotary File Finisher 5 Double Yellow 25mm	ETF525	F5 25 mm
TTUAS31	EXACTTaper™ SX-F3 ASST 31mm	6 Pk	PTURA31	ProTaper® Universal Rotary Files Asstd (SX-S2, F1-F3) 31mm	ETASST31	
TTUS131	EXACTTaper™ S1 6 pack: 31 mm	6 Pk	PTURS131	ProTaper® Universal Rotary File Shaper 1 Purple 31mm	ETS131	S1 31 mm
TTUS231	EXACTTaper™ S2 6 pack: 31 mm	6 Pk	PTURS231	ProTaper® Universal Rotary File Shaper 2 White 31mm	ETS231	S2 31 mm
TTUF131	EXACTTaper™ F1 6 pack: 31 mm	6 Pk	PTURF131	ProTaper® Universal Rotary File Finisher 1 Yellow 31mm	ETF131	F1 31 mm
TTUF231	EXACTTaper™ F2 6 pack: 31 mm	6 Pk	PTURF231	ProTaper® Universal Rotary File Finisher 2 Red 31mm	ETF231	F2 31 mm
TTUF331	EXACTTaper™ F3 6 pack: 31 mm	6 Pk	PTURF331	ProTaper® Universal Rotary File Finisher 3 Blue 31mm	ETF331	F3 31 mm
TTUF431	EXACTTaper™ F4 6 pack: 31 mm	6 Pk	PTURF431	ProTaper® Universal Rotary File Finisher 4 Double Black 31mm	ETF431	F4 31 mm
TTUF531	EXACTTaper™ F5 6 pack: 31 mm	6 Pk	PTURF531	ProTaper® Universal Rotary File Finisher 5 Double Yellow 31mm	ETF531	F5 31 mm

Heat Treated Rotary Files



SKU	DESCRIPTION	PK Size	PROTAPER [®] GOLD	PROTAPER [®] GOLD DESCRIPTION	EDGE SKU	EDGE SEQUEL [™] SAPPHIRE EDGE TAPER PLATINUM [™]
TTHSX19	EXACTTaper ^H ™ SX 6 pack 19 mm	6 Pk	PTGRSX19	ProTaper [®] Gold Rotary File Shaper X 19mm	ETSX19HT	SX 19 mm
TTHAS21	EXACTTaper ^H ™ SX-F3 ASST 21mm	6 Pk	PTGRA21	ProTaper [®] GOLD Rotary Files Asstd (SX-S2, F1-F3) 21mm	ETP21MM	
TTHS121	EXACTTaper ^H ™ S1 6 pack: 21 mm	6 Pk	PTGRS121	ProTaper [®] Gold Rotary File Shaper 1 Purple 21mm	ETS121HT	S1 21 mm
TTHS221	EXACTTaper ^H ™ S2 6 pack: 21 mm	6 Pk	PTGRS221	ProTaper [®] Gold Rotary File Shaper 2 White 21mm	ETS221HT	S2 21 mm
TTHF121	EXACTTaper ^H ™ F1 6 pack: 21 mm	6 Pk	PTGRF121	ProTaper [®] Gold Rotary File Finisher 1 Yellow 21mm	ETF121HT	F1 21 mm
TTHF221	EXACTTaper ^H ™ F2 6 pack: 21 mm	6 Pk	PTGRF221	ProTaper [®] Gold Rotary File Finisher 2 Red 21mm	ETF221HT	F2 21 mm
TTHF321	EXACTTaper ^H ™ F3 6 pack: 21 mm	6 Pk	PTGRF321	ProTaper [®] Gold Rotary File Finisher 3 Blue 21mm	ETF321HT	F3 21 mm
TTHF421	EXACTTaper ^H ™ F4 6 pack: 21 mm	6 Pk	PTGRF421	ProTaper [®] Gold Rotary File Finisher 4 Double Black 21mm	ETF421HT	F4 21 mm
TTHF521	EXACTTaper ^H ™ F5 6 pack: 21 mm	6 Pk	PTGRF521	ProTaper [®] Gold Rotary File Finisher 5 Double Yellow 21mm	ETF521HT	F5 21 mm
TTHAS25	EXACTTaper ^H ™ SX-F3 ASST 25mm	6 Pk	PTGRA25	ProTaper [®] Universal Rotary Files Asstd (SX-S2, F1-F3) 25mm	ETP25MM	
TTHS125	EXACTTaper ^H ™ S1 6 pack: 25 mm	6 Pk	PTGRS125	ProTaper [®] Gold Rotary File Shaper 1 Purple 25mm	ETS125HT	S1 25 mm
TTHS225	EXACTTaper ^H ™ S2 6 pack: 25 mm	6 Pk	PTGRS225	ProTaper [®] Gold Rotary File Shaper 2 White 25mm	ETS225HT	S2 25 mm
TTHF125	EXACTTaper ^H ™ F1 6 pack: 25 mm	6 Pk	PTGRF125	ProTaper [®] Gold Rotary File Finisher 1 Yellow 25mm	ETF125HT	F1 25 mm
TTHF225	EXACTTaper ^H ™ F2 6 pack: 25 mm	6 Pk	PTGRF225	ProTaper [®] Gold Rotary File Finisher 2 Red 25mm	ETF225HT	F2 25 mm
TTHF325	EXACTTaper ^H ™ F3 6 pack: 25 mm	6 Pk	PTGRF325	ProTaper [®] Gold Rotary File Finisher 3 Blue 25mm	ETF325HT	F3 25 mm
TTHF425	EXACTTaper ^H ™ F4 6 pack: 25 mm	6 Pk	PTGRF425	ProTaper [®] Gold Rotary File Finisher 4 Double Black 25mm	ETF425HT	F4 25 mm
TTHF525	EXACTTaper ^H ™ F5 6 pack: 25 mm	6 Pk	PTGRF525	ProTaper [®] Gold Rotary File Finisher 5 Double Yellow 25mm	ETF525HT	F5 25 mm
TTHAS31	EXACTTaper ^H ™ SX-F3 ASST 31mm	6 Pk	PTGRA31	ProTaper [®] Universal Rotary Files Asstd (SX-S2, F1-F3) 31mm	ETP31MM	
TTHS131	EXACTTaper ^H ™ S1 6 pack: 31 mm	6 Pk	PTGRS131	ProTaper [®] Gold Rotary File Shaper 1 Purple 31mm	ETS131HT	S1 31 mm
TTHS231	EXACTTaper ^H ™ S2 6 pack: 31 mm	6 Pk	PTGRS231	ProTaper [®] Gold Rotary File Shaper 2 White 31mm	ETS231HT	S2 31 mm
TTHF131	EXACTTaper ^H ™ F1 6 pack: 31 mm	6 Pk	PTGRF131	ProTaper [®] Gold Rotary File Finisher 1 Yellow 31mm	ETF131HT	F1 31 mm
TTHF231	EXACTTaper ^H ™ F2 6 pack: 31 mm	6 Pk	PTGRF231	ProTaper [®] Gold Rotary File Finisher 2 Red 31mm	ETF231HT	F2 31 mm
TTHF331	EXACTTaper ^H ™ F3 6 pack: 31 mm	6 Pk	PTGRF331	ProTaper [®] Gold Rotary File Finisher 3 Blue 31mm	ETF331HT	F3 31 mm
TTHF431	EXACTTaper ^H ™ F4 6 pack: 31 mm	6 Pk	PTGRF431	ProTaper [®] Gold Rotary File Finisher 4 Double Black 31mm	ETF431HT	F4 31 mm
TTHF531	EXACTTaper ^H ™ F5 6 pack: 31 mm	6 Pk	PTGRF531	ProTaper [®] Gold Rotary File Finisher 5 Double Yellow 31mm	ETF531HT	F5 31 mm

EXACTTAPER^HDC™

ROTARY ENDODONTIC FILES

Glide Path



Description	Part Size	Order Number
GPath 6 pack	21 mm	EDCGP140321
GPath 6 pack	25 mm	EDCGP140325
GPath 6 pack	29 mm	EDCGP140329

Auxiliary Finishers

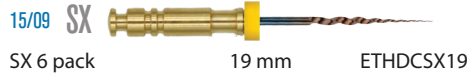


F3 6 pack:	21 mm	ETHDCF321
F3 6 pack:	25 mm	ETHDCF325
F3 6 pack:	31 mm	ETHDCF331



F4 6 pack:	21 mm	ETHDCF421
F4 6 pack:	25 mm	ETHDCF425
F4 6 pack:	31 mm	ETHDCF431

Radicular Access



SX 6 pack	19 mm	ETHDCSX19
-----------	-------	-----------

Shaper



S1 6 pack:	21 mm	ETHDCS121
S1 6 pack:	25 mm	ETHDCS125
S1 6 pack:	31 mm	ETHDCS131

Finishers



F1 6 pack:	21 mm	ETHDCF121
F1 6 pack:	25 mm	ETHDCF125
F1 6 pack:	31 mm	ETHDCF131



F2 6 pack:	21 mm	ETHDCF221
F2 6 pack:	25 mm	ETHDCF225
F2 6 pack:	31 mm	ETHDCF231

Assorted Packs Available

14/3-SX-S1-F1-F2-F3 ASST 6 pack:	21 MM-D	ETHDCAS21-I
14/3-SX-S1-F1-F2-F3 ASST 6 pack:	25 MM-D	ETHDCAS25-I

Courtesy: Dr. Reza Farshey



EXACTTaper^H DC™ / Paper Points†

Description	Part Size	Order Number
EXACTTaper ^H DC™ F1 PP 100 PK: 28 MM	DCF1/28	PPETHDCF1
EXACTTaper ^H DC™ F2 PP 100 PK: 28 MM	DCF2/28	PPETHDCF2
EXACTTaper ^H DC™ F3 PP 100 PK: 28 MM	DCF3/28	PPETHDCF3
EXACTTaper ^H DC™ F4 PP 100 PK: 28 MM	DCF4/28	PPETHDCF4

EXACTTaper^H DC™ / Gutta Percha†

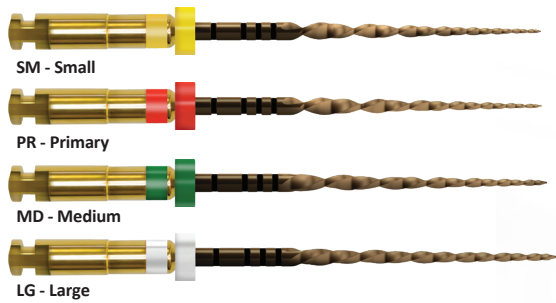
Description	Part Size	Order Number
EXACTTaper ^H DC™ F1 GP 60 PK: 28 MM	DCF1/28	GPETHDCF1
EXACTTaper ^H DC™ F2 GP 60 PK: 28 MM	DCF2/28	GPETHDCF2
EXACTTaper ^H DC™ F3 GP 60 PK: 28 MM	DCF3/28	GPETHDCF3
EXACTTaper ^H DC™ F4 GP 60 PK: 28 MM	DCF4/28	GPETHDCF4

† Paper Points and Gutta Percha not available in all countries. Please contact your SS White representative for details.

EXACTFLOW^H[™]

RECIPROCATING FILE SYSTEM

- Proprietary Heat-Matrix[™] technology
- Single file system



ORDER #	DESCRIPTION	NAME	LENGTH	PK
TFHAS21	EXACTFlowH [™] Files	ASST	21MM	4
TFHSM21	EXACTFlowH [™] Files	SM	21MM	3
TFHPR21	EXACTFlowH [™] Files	PR	21MM	3
TFHMD21	EXACTFlowH [™] Files	MD	21MM	3
TFHLG21	EXACTFlowH [™] Files	LG	21MM	3
TFHAS25	EXACTFlowH [™] Files	ASST	25MM	4
TFHSM25	EXACTFlowH [™] Files	SM	25MM	3
TFHPR25	EXACTFlowH [™] Files	PR	25MM	3
TFHMD25	EXACTFlowH [™] Files	MD	25MM	3
TFHLG25	EXACTFlowH [™] Files	LG	25MM	3
TFHSM31	EXACTFlowH [™] Files	SM	31MM	3
TFHPR31	EXACTFlowH [™] Files	PR	31MM	3
TFHMD31	EXACTFlowH [™] Files	MD	31MM	3
TFHLG31	EXACTFlowH [™] Files	LG	31MM	3

AVAILABLE IN STERILE 3 PACKS STERILE R

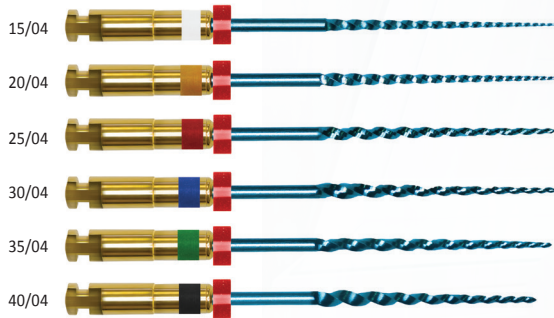
ORDER #	DESCRIPTION	NAME	LENGTH	PK
TFHSM21-S3	Sterile EXACTFlowH [™] Files	SM	21MM	3
TFHPR21-S3	Sterile EXACTFlowH [™] Files	PR	21MM	3
TFHMD21-S3	Sterile EXACTFlowH [™] Files	MD	21MM	3
TFHLG21-S3	Sterile EXACTFlowH [™] Files	LG	21MM	3
TFHSM25-S3	Sterile EXACTFlowH [™] Files	SM	25MM	3
TFHPR25-S3	Sterile EXACTFlowH [™] Files	PR	25MM	3
TFHMD25-S3	Sterile EXACTFlowH [™] Files	MD	25MM	3
TFHLG25-S3	Sterile EXACTFlowH [™] Files	LG	25MM	3
TFHSM31-S3	Sterile EXACTFlowH [™] Files	SM	31MM	3
TFHPR31-S3	Sterile EXACTFlowH [™] Files	PR	31MM	3
TFHMD31-S3	Sterile EXACTFlowH [™] Files	MD	31MM	3
TFHLG31-S3	Sterile EXACTFlowH [™] Files	LG	31MM	3



EXACTGUIDE™

ROTARY ENDODONTIC FILES

- Available in ISO tip sizes from 15-50 and in 04 and 06 taper
- Proprietary heat treatment process



ORDER #	DESCRIPTION	NAME	LENGTH	PK
TGH041521	EXACTGuide™	15/.04 White	21mm	4 PK
TGH041525	EXACTGuide™	15/.04 White	25mm	4 PK
TGH041530	EXACTGuide™	15/.04 White	30mm	4 PK
TGH042021	EXACTGuide™	20/.04 Yellow	21mm	4 PK
TGH042025	EXACTGuide™	20/.04 Yellow	25mm	4 PK
TGH042030	EXACTGuide™	20/.04 Yellow	30mm	4 PK
TGH042521	EXACTGuide™	25/.04 Red	21mm	4 PK
TGH042525	EXACTGuide™	25/.04 Red	25mm	4 PK
TGH042530	EXACTGuide™	25/.04 Red	30mm	4 PK
TGH043021	EXACTGuide™	30/.04 Blue	21mm	4 PK
TGH043025	EXACTGuide™	30/.04 Blue	25mm	4 PK
TGH043030	EXACTGuide™	30/.04 Blue	30mm	4 PK
TGH043521	EXACTGuide™	35/.04 Green	21mm	4 PK
TGH043525	EXACTGuide™	35/.04 Green	25mm	4 PK
TGH043530	EXACTGuide™	35/.04 Green	30mm	4 PK
TGH044021	EXACTGuide™	40/.04 Black	21mm	4 PK
TGH044025	EXACTGuide™	40/.04 Black	25mm	4 PK
TGH044030	EXACTGuide™	40/.04 Black	30mm	4 PK
TGH044521	EXACTGuide™	45/.04 White	21mm	4 PK
TGH044525	EXACTGuide™	45/.04 White	25mm	4 PK
TGH044530	EXACTGuide™	45/.04 White	30mm	4 PK
TGH045021	EXACTGuide™	50/.04 Yellow	21mm	4 PK
TGH045025	EXACTGuide™	50/.04 Yellow	25mm	4 PK
TGH045030	EXACTGuide™	50/.04 Yellow	30mm	4 PK
TGH04A25	EXACTGuide™	.04 Asstd (15-30)	25mm	4 PK

ORDER #	DESCRIPTION	NAME	LENGTH	PK
TGH061521	EXACTGuide™	15/.06 White	21mm	4 PK
TGH061525	EXACTGuide™	15/.06 White	25mm	4 PK
TGH061530	EXACTGuide™	15/.06 White	30mm	4 PK
TGH062021	EXACTGuide™	20/.06 Yellow	21mm	4 PK
TGH062025	EXACTGuide™	20/.06 Yellow	25mm	4 PK
TGH062030	EXACTGuide™	20/.06 Yellow	30mm	4 PK
TGH062521	EXACTGuide™	25/.06 Red	21mm	4 PK
TGH062525	EXACTGuide™	25/.06 Red	25mm	4 PK
TGH062530	EXACTGuide™	25/.06 Red	30mm	4 PK
TGH063021	EXACTGuide™	30/.06 Blue	21mm	4 PK
TGH063025	EXACTGuide™	30/.06 Blue	25mm	4 PK
TGH063030	EXACTGuide™	30/.06 Blue	30mm	4 PK
TGH063521	EXACTGuide™	35/.06 Green	21mm	4 PK
TGH063525	EXACTGuide™	35/.06 Green	25mm	4 PK
TGH063530	EXACTGuide™	35/.06 Green	30mm	4 PK
TGH064021	EXACTGuide™	40/.06 Black	21mm	4 PK
TGH064025	EXACTGuide™	40/.06 Black	25mm	4 PK
TGH064030	EXACTGuide™	40/.06 Black	30mm	4 PK
TGH064521	EXACTGuide™	45/.06 White	21mm	4 PK
TGH064525	EXACTGuide™	45/.06 White	25mm	4 PK
TGH064530	EXACTGuide™	45/.06 White	30mm	4 PK
TGH065021	EXACTGuide™	50/.06 Yellow	21mm	4 PK
TGH065025	EXACTGuide™	50/.06 Yellow	25mm	4 PK
TGH065030	EXACTGuide™	50/.06 Yellow	30mm	4 PK
TGH06A25	EXACTGuide™	.06 Asstd (15-30)	25mm	4 PK

SS White® International Endodontic Catalog
Rev B. - 9.29.2023



6 4 1 1 1

800.535.2877 | www.sswhitedental.com
1145 Towbin Avenue Lakewood, New Jersey 08701